

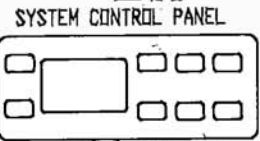
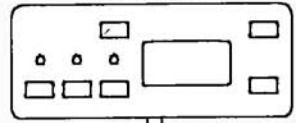


Balboa Instruments Incorporated
01/14/06

M3 SYSTEM WIRING DIAGRAM

P/N 53170HC1

STANDARD DIGITAL PANEL (OPTIONAL)

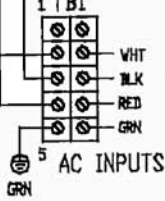


J25 DELUXE MODEL ONLY
50Hz = 1 PUMP
60Hz = 2 PUMPS

TRANSFORMER

HEATER

FUSE 30 AMP 300V
BRANCH CKT PROTECTION ONLY



PUMP 2

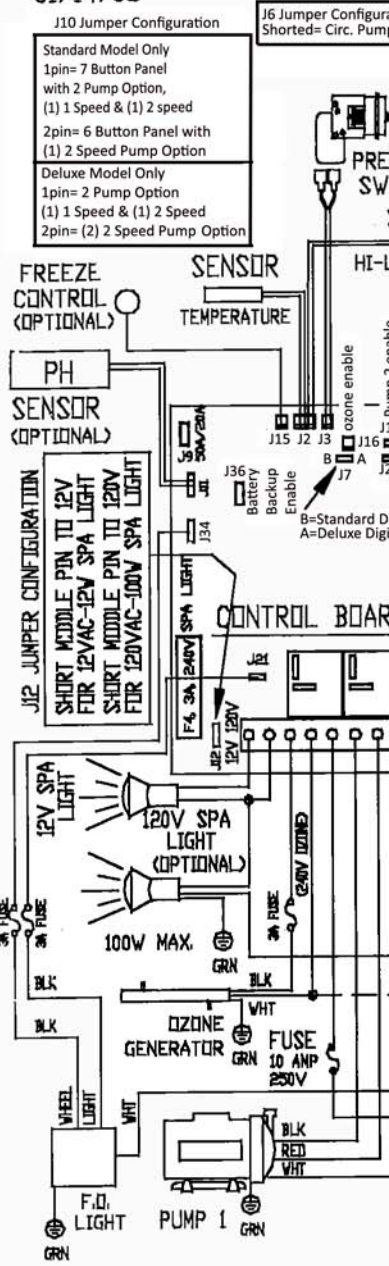
CIRC. PUMP

CONNECT ONLY TO A CIRCUIT PROTECTED BY A CLASS A GFCI.

A disconnecting means must be installed within sight from the equipment and at least 5 feet (1.52 m) from the inside walls of the pool spa, or hot tub.

BLOWER OR OZONE 240V TO 120V CONVERSION

1. FOR BLOWER, DISCONNECT (WHT) WIRE @ FINGER #5, FOR OZONE, DISCONNECT (WHT) WIRE @ J4 #7.
2. CLIP THE CONNECTOR OFF OF THE (WHT) WIRE AND STRIP THE INSULATION BACK APPROX. 1/4".
3. MOVE (WHT) OZONE OR BLOWER WIRE TO (T2) POSITIONS AS INDICATED BY DASHED LINES.



J10 Jumper Configuration

Standard Model Only
1pin= 7 Button Panel with 2 Pump Option, (1) 1 Speed & (1) 2 speed
2pin= 6 Button Panel with (1) 2 Speed Pump Option

Deluxe Model Only
1pin= 2 Pump Option (1) 1 Speed & (1) 2 Speed
2pin= (2) 2 Speed Pump Option

J6 Jumper Configuration Shorted= Circ. Pump enabled

FREEZE CONTROL (OPTIONAL)

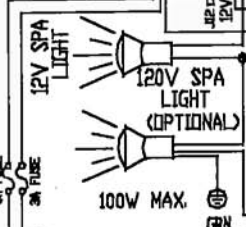
PH SENSOR (OPTIONAL)

J12 JUMPER CONFIGURATION
SHORT MIDDLE PIN TO 12V FOR 12VAC-12V SPA LIGHT
SHORT MIDDLE PIN TO 120V FOR 120VAC-100V SPA LIGHT

TEMPERATURE SENSOR

PRESSURE SWITCH SENSOR
HI-LIMIT/FREEZE

CONTROL BOARD



OZONE GENERATOR



BLOWER

DEVICE	VOLTAGE	RATING
PUMP1	240V	12A
PUMP2	240V	12A
CIRC PUMP	120V	4A
OZONE	240/120V	1A
SPA LIGHT1	12V	12W
FIBER OPTIC	120V	2A
BLOWER	240/120V	8A
SPA LIGHT2	120V	100W
HEATER	240V	5.5KW

TOTAL OUTPUT AMPERAGE DRAW NOT TO EXCEED MAX INPUT RATING OF SPA.