

@Home V2 to V3 Gecko Pack Replacement.

Parts needed:

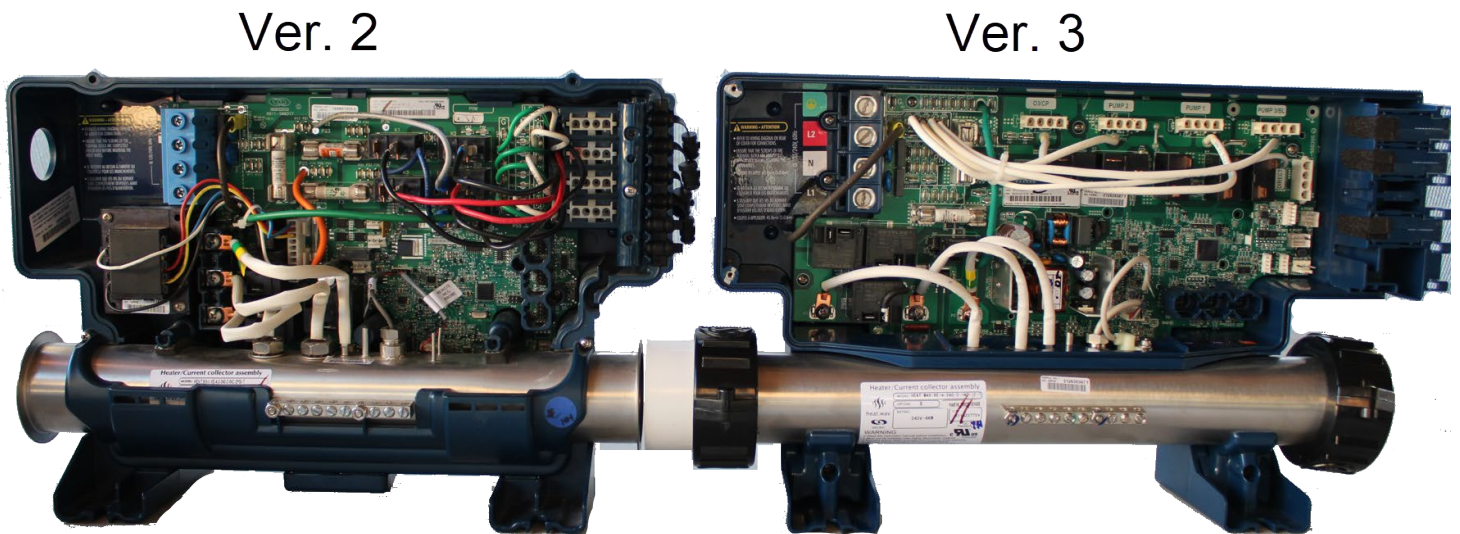
- 6600-536 Version 3 Gecko Pack
- 6000-124 Pressure switch plug and Teflon tape *
- 6600-537 Top side control **
- N001-65YU One pump inlay **
- N001-80YU Two pump inlay**
- 01511-05 Small silicone tube***

* Only needed if the current pressure switch obstructs the pack installation.

** Only if the spa is equipped with in.stream Audio system.

*** Only if the top side control needs replacement.

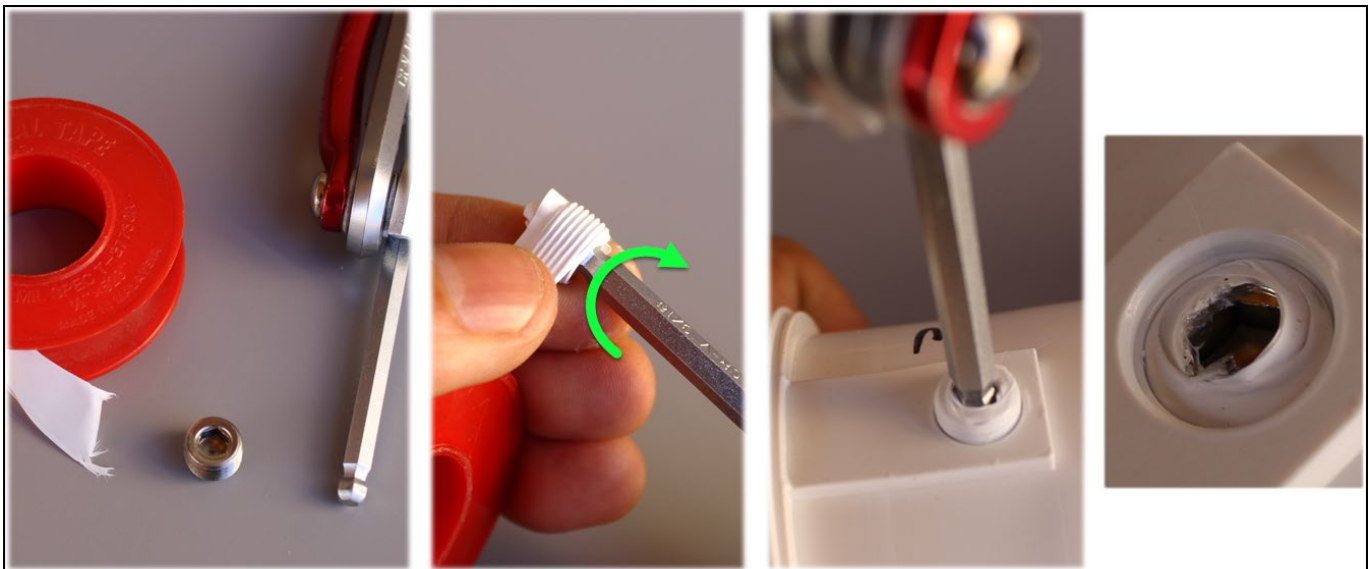
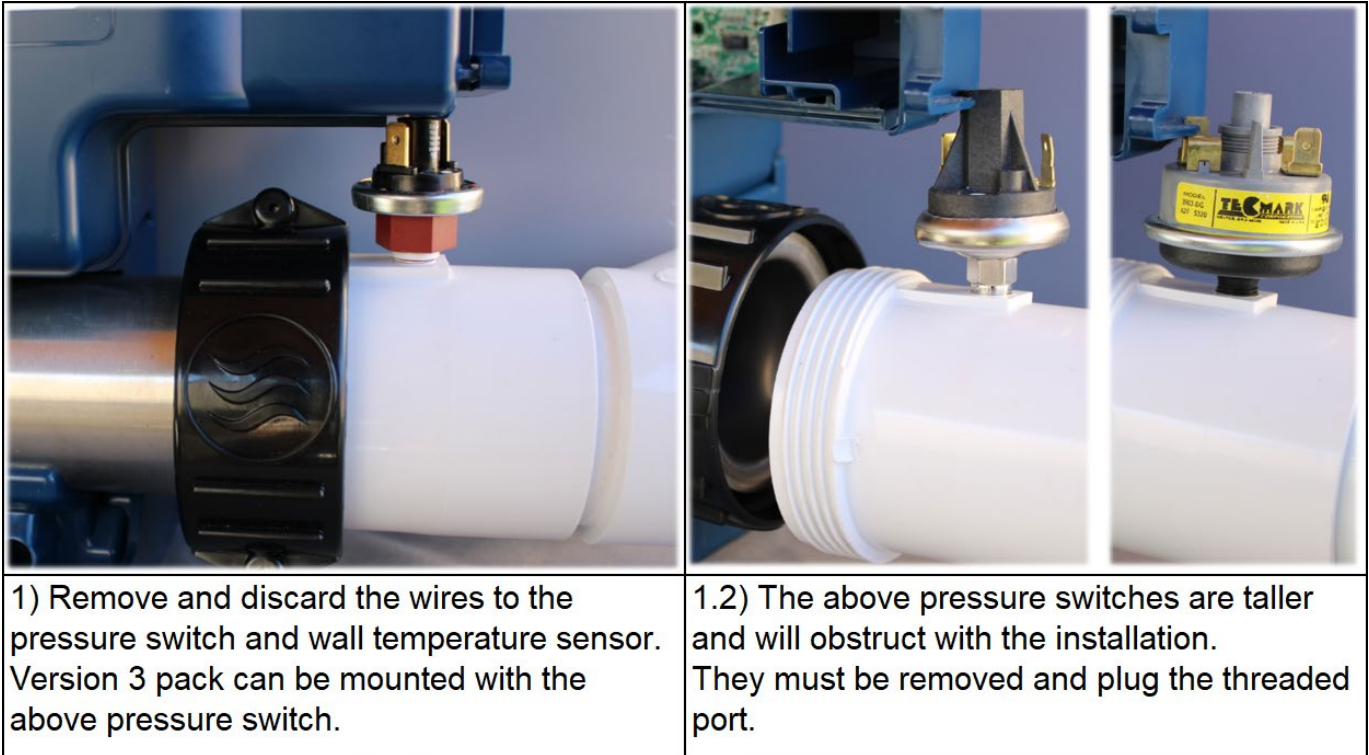
Please read instructions prior to performing this repair and make sure that all parts and accessories are available.



- Both packs are the same height and there is no need to retrofit any plumbing.
- Same AMP connections for pumps and ozone.
- 2015-2021 ½ top side controls, will not operate the audio menu. If the spa is equipped with in.stream (1 or 2) the top side control will need to be replaced.
- Version 3 Gecko packs do not use an external temperature sensor or pressure switch; these sensors are integrated on the heater.

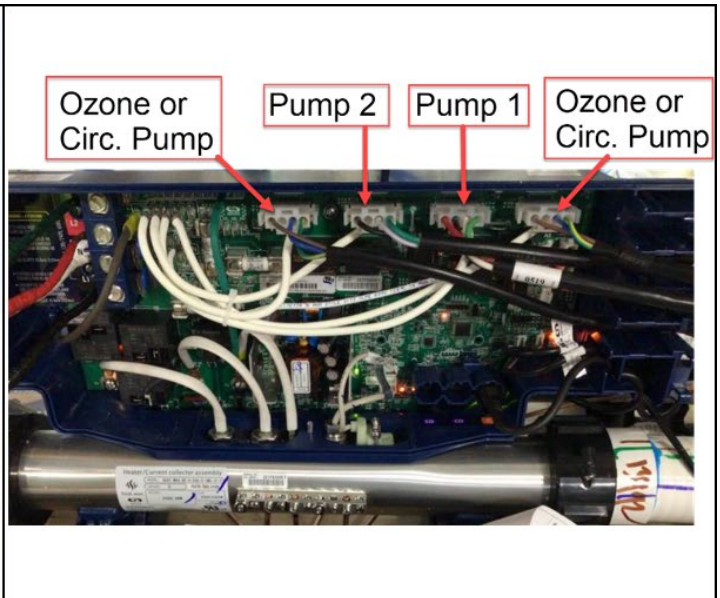
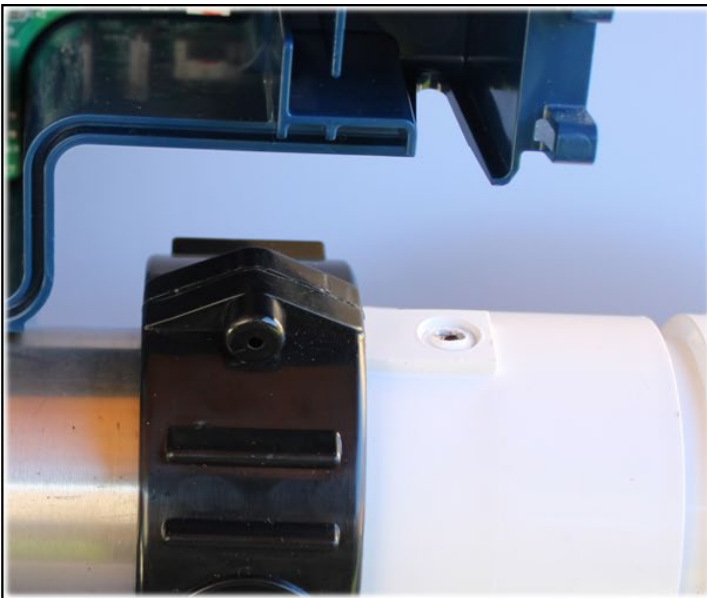
Replacement pack is done as normal repair.

- Turn off the power to the spa
- Drain the spa or close the slice valves if equipped.
- Disconnect all harnesses and power wires to the pack. (Tag them if necessary)
- Dismount the pack from the wooden base.
- Mount V3 pack.



1.3 Plug installation.

- 1) Attach the plug to the Allen key (3/16").
- 2) Wrap teflon tape to the plug while turning the key clockwise for 3-4 turns and cut end.
- 3) Install the plug to the threaded port.
- 4) Tighten it until snug or until 1-3 threads are visible on top.



2) Install the pack to plumbing, tighten heater unions and mount it to the wooden base with screws previously removed.

3) Connect jet pump(s) Ozone and Circulation pump (if equipped) as shown above. Firmly secure the incoming power to pack.

4) Arrange the white/common wires under each port depending on the model and voltage.

5) Determine and change the dark brown wire (P5) to line 2 or neutral depending on the system.

6) Connect light cable to P65.

** Important note: models Serenade, Cove and Journey Jet pump, Ozone and Circulation pump, should always receive 120Vac. and the white wire should be on (N) neutral.*

5) Reset the power to the spa.

6) If the upper control panel displays L1, the pack is asking for the level configuration.

- Press the up or down button to select the correct level configuration according to the model, options (ozone - no ozone) and Voltage (120Vac–240Vac) Save by pressing the Mode button once.

- If the upper control does not display L1, change the level configuration by pressing and holding Jet1 button for 30 seconds; change the level configuration and save with Mode.

		Level configuration		White/Common wire		Dark Heater wire
		No ozone	With Ozone	Jet pump(s)	Ozone Circ. P.	
240V AC system	Model	1	6	(L2) Line 2		(L2) Line 2 P17
	Meridian					
	Latitude					
	Nova					
	Orion	2	7			
	Wayfarer					
	Breeze					
	Sojourn	3	8			
	Dream					
	Arena					
Serenade	4	9	(N) Neutral			
Cove						
Journey						
120V AC system	Serenade	5	10	(N) Neutral		(N) Neutral P44
	Cove					
	Journey					