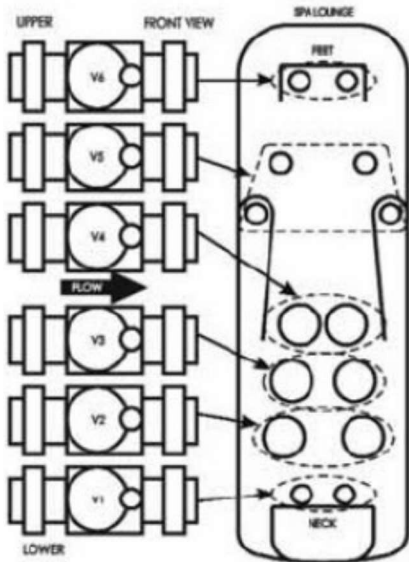
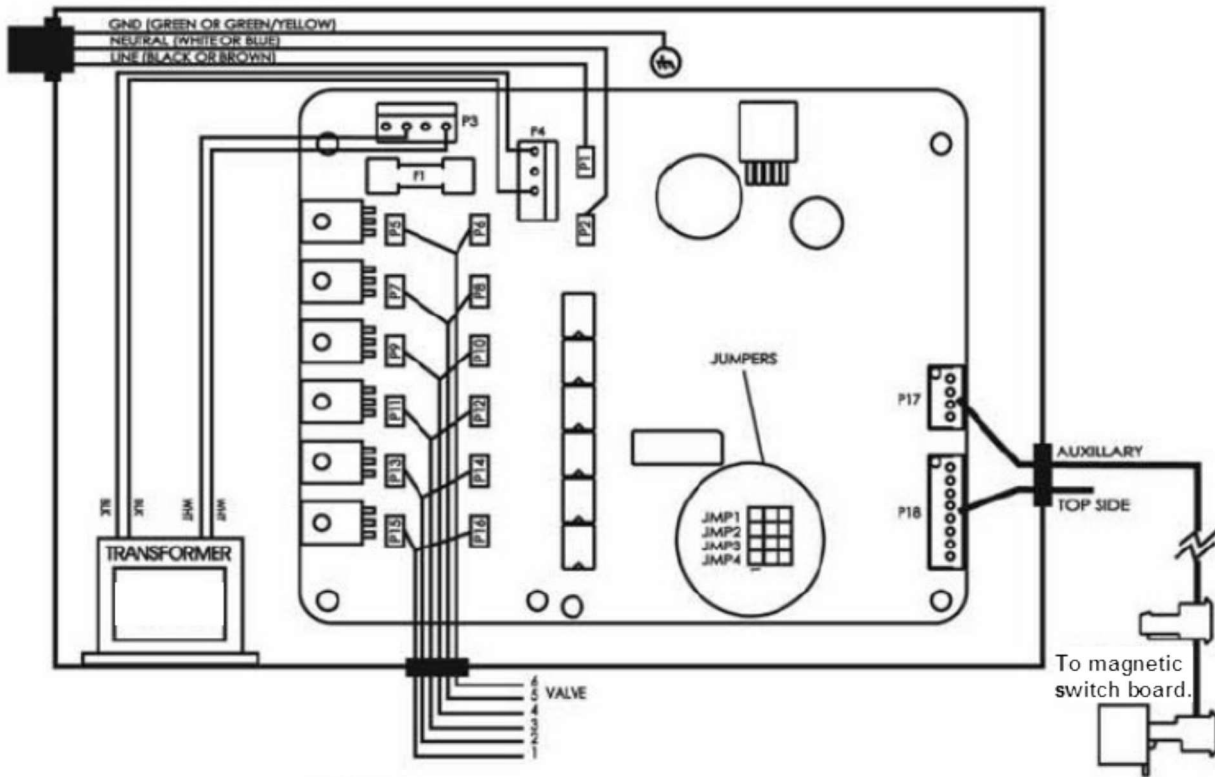


Massage sequencer

Spas equipped with a Massage sequencer seat will be equipped with its own lower control, normally found on that same corner.

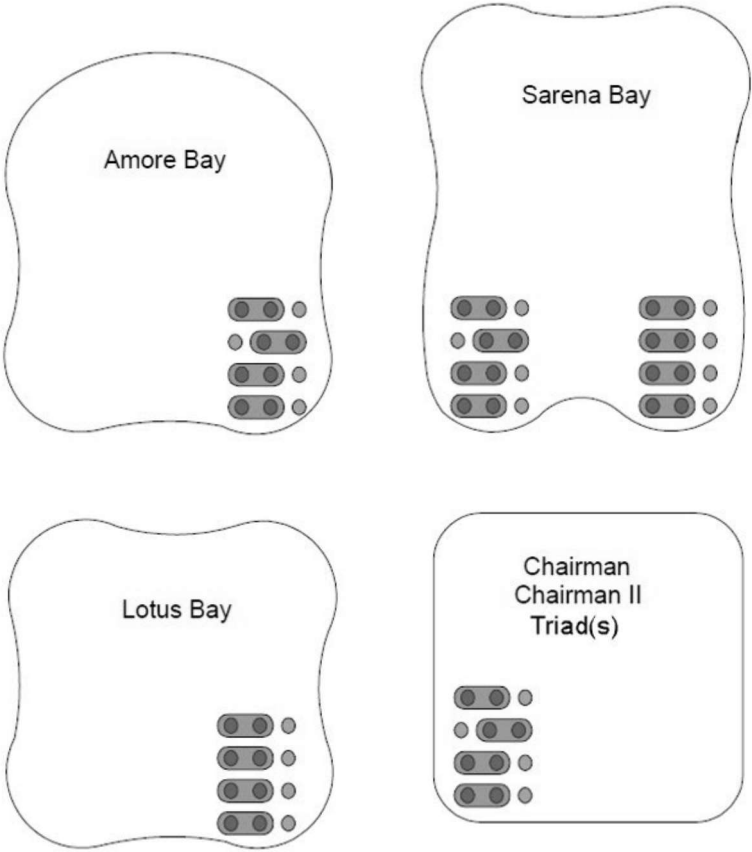
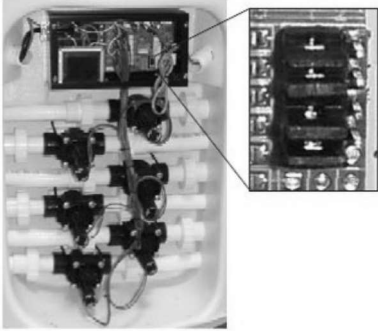
Wiring diagram.



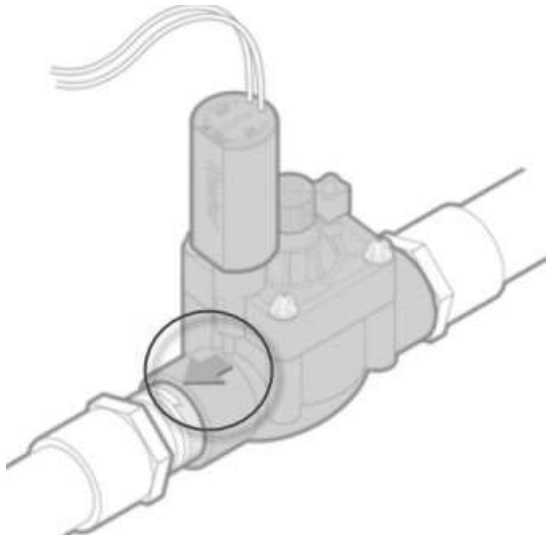
JUMPER SETTINGS

JMP 1	<input type="checkbox"/> = VALVE TIMING 2 SEC.	<input type="checkbox"/> = VALVE TIMING 4 SEC.
JMP 2	<input type="checkbox"/> = PUMP #1	<input type="checkbox"/> = PUMP #2
JMP 3	<input type="checkbox"/> = NOT USED	<input type="checkbox"/> = NOT USED
JMP 4	<input type="checkbox"/> = NOT USED	<input type="checkbox"/> = NOT USED

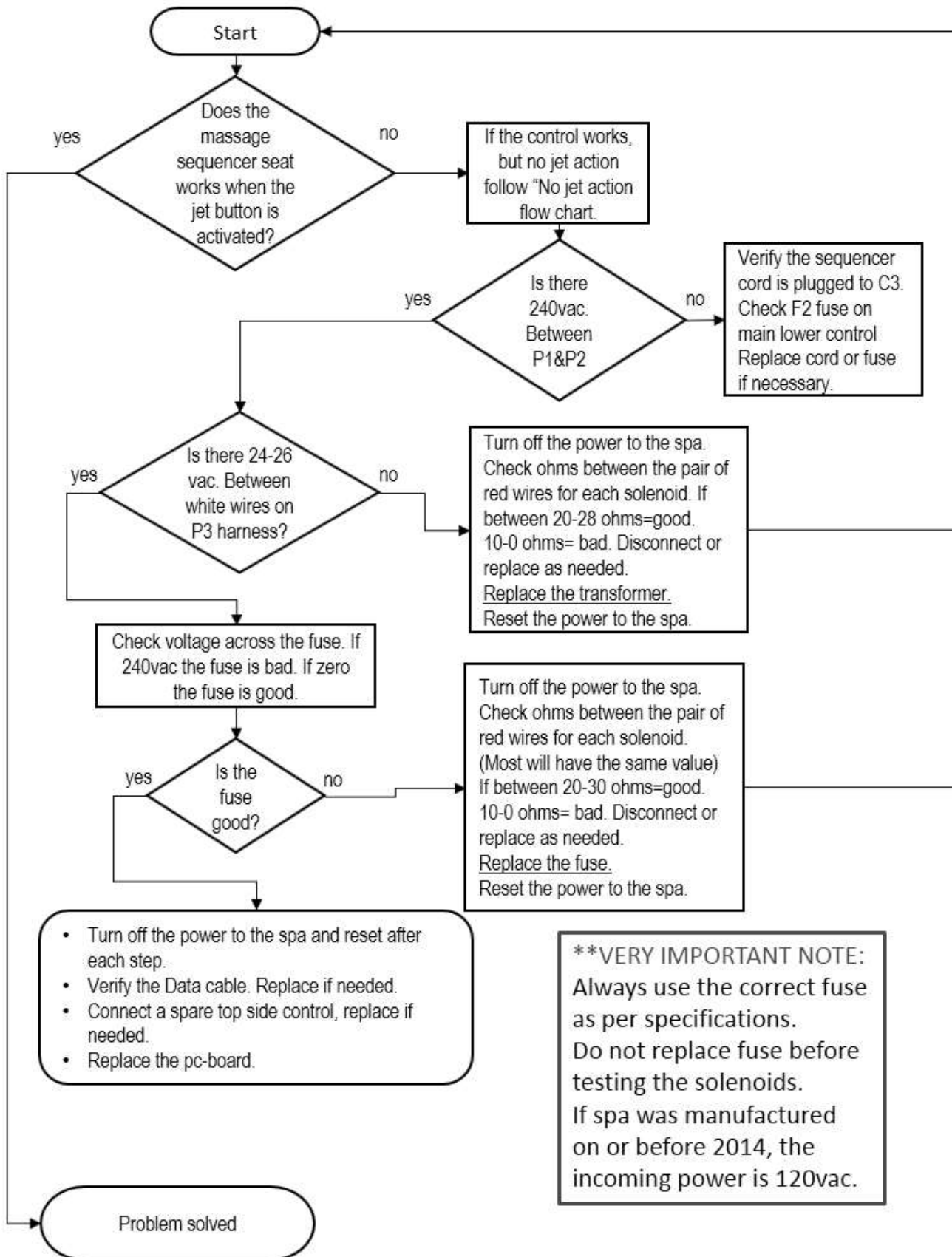
If the pc-board needs to be replaced, verify the jumper configuration is set for the correct pump.



If a solenoid valve needs to be replaced, verify that the flow arrow is pointing to the correct direction. Normally they all point towards the equipment compartment.



Message sequencer, Nothing works flow chart.



Message sequencer, No jet action flow chart.

