



EasySpaParts.com

We know what you need.

## Pillow Carrier Rails

When one or both of the Pillow Rails separate from the shell, the carrier assembly will no longer slide up or down and adjust to your desired height. The methods originally used to mount the rails involved either nylon or metal screws, or an adhesive foam gasket. New spas use a thin, "Very High Bond", self-adhesive gasket for mounting these rails. The following procedure appears long, but we broke it down into small steps. Be patient, take your time, and you'll be pleased with the results. You can call us anytime you have a question or need additional assistance. Toll Free (866) 418-1840.



### Tools Required for the Job

- Channel Locks
- Small Phillips Head Screw Driver
- Medium Flat Head Screw Driver
- Pencil
- Diagonal Cutters
- Small Hammer
- Putty Knife or Spatula
- Heat Gun or Blow Dryer

### Parts Required for the Job

- Pillow Rails & Gaskets
- Primer
- Hose with Nuts
- Silicone

### STEP 1:

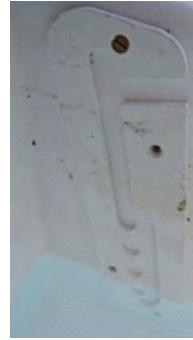
**Remove Hose** - To get started you'll need to remove the threaded nut from the barb attached to the spa shell. Use a pair of channel locks for this step.

If you'd prefer, cut the hose in half and move the pillow carrier out of the way so it is easier to reach the nut. A pair of diagonal cutters is effective for cutting the coil in the hose.



## STEP 2:

**Pillow Rail with Nylon Screws** - When the pillow carrier assembly has been moved out of the way this is what the rail looks like when it is still attached to the spa shell. Lower the water level of the spa enough so you can work in a clean dry area.



## STEP 3:

**Remove Rails** - If the rails were originally installed with nylon screws, the heads can be removed as pictured using a small flathead screwdriver. Metal fasteners can be removed by simply unscrewing them. Rails utilizing a foam gasket can also be removed as pictured. Note: Make sure to remove all of the foam gasket before proceeding. A plastic spatula may be helpful here.



## STEP 4:

**Tap Screw Body into Shell & Fill Hole with Silicone** - If you popped off the nylon head, use a small Philips head screwdriver and hammer to push the threaded body into the foam behind the shell. Go easy; it only needs to be pushed about 1/2 inch. Use a high-quality, clear silicone to fill the foam void and seal the hole. Remove excess silicone with your finger.



## STEP 5:

### **Clean Spa Surface with Isopropyl Alcohol** -

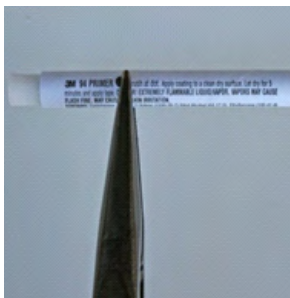
Remove any dirt, grime or old adhesive residue. Thoroughly clean the surface where the old rail was applied, with isopropyl alcohol.



## STEP 6:

**Draw Outline of Old Pillow Placement** - Hold the old rail in its original position using the screw holes as a guide. With a pencil, draw a silhouette of the rail. This will ensure the new rail lines up with the existing plumbing.

Use needle nose pliers to pinch the dot on the primer tube. Use the primer to "paint" inside the lines of your profile. Wait three minutes for the primer to cure before proceeding.



## STEP 7:

**Remove Liner & Install Rail** - After three minutes, the primer is ready to bond to the "Very High Bond" adhesive gasket. Remove the paper liner and lay the adhesive side of the new rail inside the lines of its' silhouette. Remove the paper liner and lay the adhesive side of the new rail inside it's silhouette. The open slot should be placed on top and facing the "water" side of the spa. Hold firmly in place for two minutes. **Note: The" VHB" gasket is quite tacky and will not allow you to move it after it has been pressed into place.**



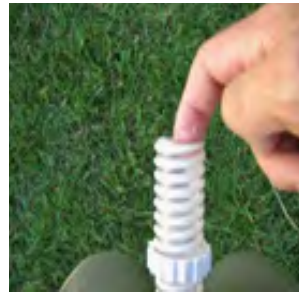
## STEP 8:

**Repeat on Other Rail** - Repeat steps 3-7 with the other rail.



## STEP 9:

**Put Liquid Soap inside Hose** - Using some liquid dish detergent from the kitchen, apply a thin-film on the inside of the hose. This will act as a lubricant when you slide one end of the new hose in place in Step 12.



## STEP 10:

**Thread the nuts up the coil toward the middle of the hose** - This puts them in position for the next step



## STEP 11:

**Heat One End of Hose with Blow Dryer** - Using a household blow dryer or heat gun, warm one end of your new corrugated hose for about 60 seconds. Rotate the hose as you go so the complete diameter has softened.



## STEP 12:

**Slide Hose onto the Pillow Barb** - Once heated, the hose should be soft enough to slide into place. If not, heat further. Screw the threaded nut down the hose coil only until it meets resistance. No need to go any further; additional tightening is not required.



## STEP 13:

**Heat Other End of Hose and Slide onto the Shell Barb** - Repeat step 12 to attach the other end of the hose onto the spa shell barb. Screw the threaded nut down the hose coil until it meets resistance.



## STEP 14:

**Place Lower Nubs into Bottom of Rails** - With both ends of the hose attached you can now install the pillow carrier. Tilting the carrier "box" as shown, place one of the lower nubs into the lower end of the rail. This will allow you to tilt the other bottom nub up, then into its opposite rail. Use a little force if necessary.



## STEP 15:

**Slide Upper Nubs into Upper Slots** - Raise the top of the carrier "box" into the upright position, and slide the upper nubs into the rail slots.



## STEP 16:

**Tap Pillow Carrier Assembly into Place** - Use the palm of your hand to tap pillow carrier assembly into place. You should now be able to adjust the pillow carrier to your desired height.



**These instructions are also on-line and  
in color at [www.EasySpaParts.com](http://www.EasySpaParts.com)  
Should you require additional information,  
please call us toll free at 866.418.1814**

These instructions are for informational purposes only. Easy Spa Parts does not guarantee that following these instructions will resolve your specific spa condition, nor does Easy Spa Parts accept liability for work performed by anyone attempting the repair or part replacement. These instructions are provided solely by Easy Spa Parts. Certain parts mentioned in the instructions are manufactured by third parties, including Dimension One Spas. Dimension One Spas has not supplied or reviewed these instructions. Dimension One Spas shall have no liability to you relating in any manner to these instructions or any acts or omissions by Easy Spa Parts.

TO THE MAXIMUM EXTENT PERMITTED BY APPLICABLE LAW: 1) EASY SPA PARTS AND DIMENSION ONE SPAS EXCLUDE ALL IMPLIED WARRANTIES THAT MAY ARISE IN CONNECTION WITH THE INSTRUCTIONS, INCLUDING ANY WARRANTY OF MERCHANTABILITY, NON-INFRINGEMENT, AND FITNESS FOR A PARTICULAR PURPOSE; 2) NEITHER EASY SPA PARTS NOR DIMENSION ONE SPAS SHALL BE LIABLE UNDER ANY LEGAL OR EQUITABLE THEORY, WHETHER IN CONTRACT, TORT OR OTHERWISE (INCLUDING NEGLIGENCE AND STRICT LIABILITY) FOR ANY DIRECT, INDIRECT, CONSEQUENTIAL, SPECIAL OR PUNITIVE DAMAGES WHATSOEVER, ARISING FROM YOUR USE OF THE INSTRUCTIONS OR FROM ANY MATERIAL CONTAINED IN, OR OMITTED FROM, THE INSTRUCTIONS